



U. S. Department of Agriculture
Dillon Ranger District
680 Blue River Parkway
Silverthorne, CO 80498
(970) 468-5400



CATARACT LAKE (UPPER)- FDT 63

Difficulty: MORE DIFFICULT

Trail Use: Moderate to Heavy

Length: 5.0 miles one-way

Elevation: Start at 8,597 feet and ends at 10,613 feet (highest point 10,878 feet)

Elevation Gain: +2,650 feet - 634 feet = +2,016 feet

Open To: **HIKING, HORSE, X-C SKIING, SNOWSHOEING**

Access:

- From I-70 take Exit 205, Silverthorne / Dillon, and travel north on HWY 9.
- Travel 16 miles north on HWY 9. After mile marker 118 turn left onto Heeney Road (County Rd 30).
- Follow Heeney Rd for 5.3 miles and turn left onto Cataract Creek Road (County Rd 1725).
- Continue for 2.0 miles and park at the Surprise Trailhead (FDT 62) on your left.

Trail Highlights:

- This trail enters the Eagles Nest Wilderness Area (see regulations below).
- The beginning of the trail climbs through aspen groves and then becomes increasingly more difficult as you climb in elevation through fir and spruce forest.
- Approximately 2.3 miles from the trailhead you will intersect with the Gore Range Trail (FDT 60).
- Turn right (west) on the Gore Range Trail and in 0.2 miles the trail passes Surprise Lake. Continue another 0.6 miles to the intersection with the Upper Cataract Trail, turn left.
- Travel approximately 1.9 miles to Upper Cataract Lake. There is an unmarked spur before you cross the outlet that will take you to the lake.
- Another option is to continue hiking 1.3 miles up the drainage to Mirror Lake. Fishing is reported to be good in both of these lakes.
- An abundance of wildflowers can be seen from late-June through mid-July.

Eagles Nest Wilderness Regulations:

- **Motor vehicles, mountain bikes and motorized equipment are prohibited.**
- **DOGS MUST BE ON A LEASH AT ALL TIMES IN THE EAGLES NEST WILDERNESS.**
- **Group size is limited to 15 people.**
- **Camping is prohibited within 100 feet of lakes, streams and trails.**
- **Campfires are prohibited at Surprise Lake, Upper Cataract Lake and Mirror Lake (stoves only).**
- **Please contact Dillon Ranger District office for more information and regulations regarding the Eagles Nest Wilderness Area.**

THE INFORMATION CONTAINED HEREIN IS INTENDED TO BE A GENERAL GUIDE ONLY, NOT FOR NAVIGATIONAL PURPOSES..

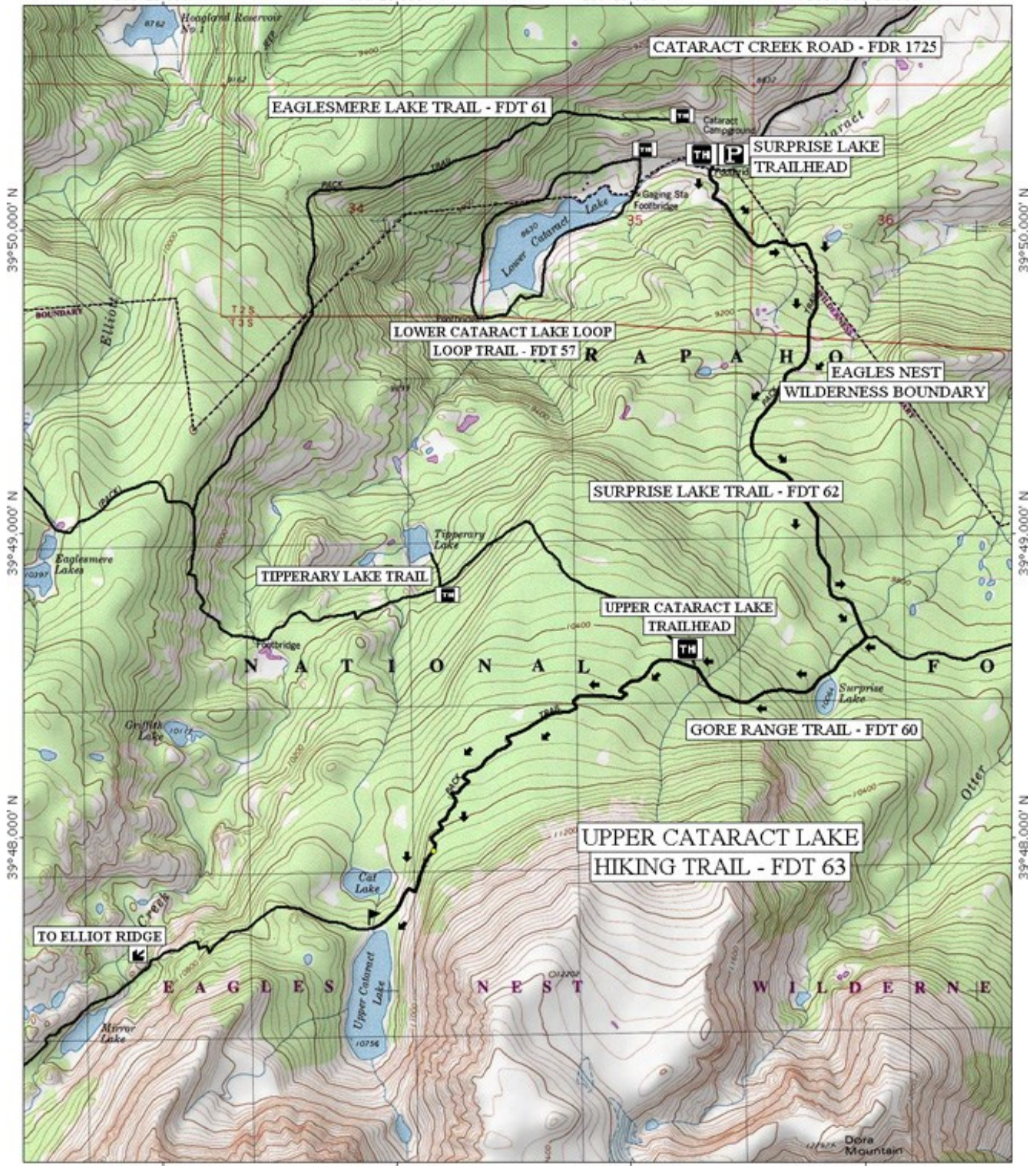
DILLON RANGER DISTRICT WHITE RIVER NATIONAL FOREST

106°21.000' W

106°20.000' W

106°19.000' W

WGS84 106°18.000' W



TN 106°

106°21.000' W

106°20.000' W

106°19.000' W

WGS84 106°18.000' W

Map created with TOPOI® ©2003 National Geographic (www.nationalgeographic.com/topo)

