

Dillon Ranger District
680 Blue River Parkway
Silverthorne, CO 80498
(970) 468-5400



Licensed Only

ROCK CREEK ROAD/TRAIL (#1350/#46)

Difficulty: MODERATE TO MORE DIFFICULT

Trail Use: Moderate

Length: 4.45 miles (one-way)

Elevation: Starts at 8,808 feet and ends at 10,242 feet (highest point 10,242 feet)

Elevation Gain: +1,434 feet - 0 feet = +1,434 feet

Open In Summer To: **HIKING, HORSE, MTN. BIKING**

ROAD ONLY: 4X4, MOTORCYCLE (Licensed Only)

Open In Winter To: **X-C SKIING, SNOWSHOEING**

Access:

- From I-70 take Exit 205, Silverthorne / Dillon, and travel north on HWY 9 for approximately 7.7 miles.
- Turn left onto Rock Creek Road (FDR 1350) across from the Blue River Campground.
- Follow the gravel road for approximately 1.2 miles and turn left at the road marked "Rock Creek".
- The winter trailhead parking lot is immediately on your left.
- For summer access, you can drive up the 4WD road for approximately 1.7 miles to the Rock Creek Trailhead and parking lot. Motor vehicles are prohibited beyond this point.
- **Seasonal Closure:** Rock Creek Road is closed to motor vehicles Nov. 23 thru May 20 or until road is dry.

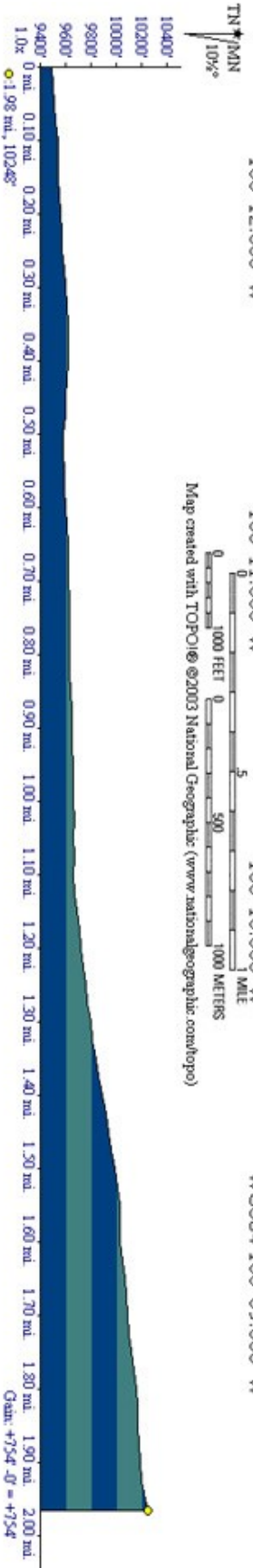
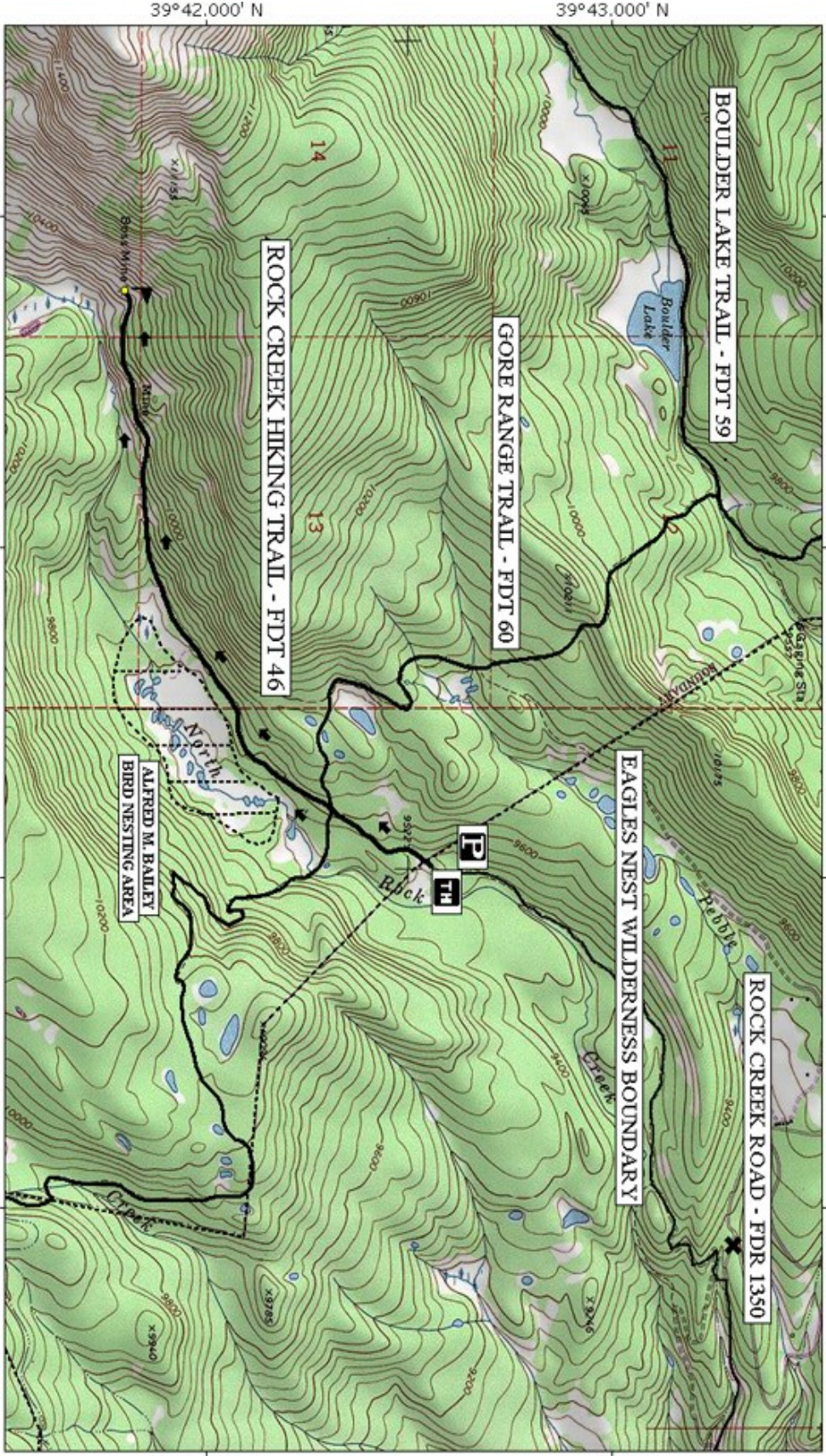
Road/Trail Highlights:

- In winter you will begin up a road that winds through aspen and lodgepole pine forests. After traveling 1.7 miles up the road you will come to the summer Rock Creek Trailhead parking sign.
- Continue on the Rock Creek Trail (FDT 46) for .3 miles to the intersection with the Gore Range Trail (FDT 60). Continue straight (west) past the intersection.
- Approximately 1.5 miles past the Gore Range Trail intersection the Alfred M. Bailey Bird Nesting Area may be seen on the left side of the trail. This site contains examples of nearly all the many habitats found in the Gore Range.
- At the end of the trail is the historic Boss Mine. There are several old structures there from when this was an active mine. Please leave all mining artifacts where they are so others may enjoy them.

Important Information:

- The Rock Creek Trail enters the Eagles Nest Wilderness Area. Check with the District Office and trailhead signs for restrictions that apply for travel and camping throughout this area. Dogs must be leashed.

THE INFORMATION CONTAINED HEREIN IS INTENDED TO BE A GENERAL GUIDE ONLY, NOT FOR NAVIGATIONAL PURPOSES..



Map created with [TOPOLite](http://www.nationalgeographic.com/topo/) ©2003 National Geographic (www.nationalgeographic.com/topo/)