



U. S. Department of Agriculture  
Dillon Ranger District  
680 Blue River Parkway  
Silverthorne, CO 80498  
(970) 468-5400



## **MAYFLOWER GULCH - FDR 1178**

**Difficulty:** MODERATE

**Trail Use:** Moderate

**Length:** 2.8 miles one-way

**Elevation:** Start at 10,996 feet and ends at 12,415 feet (highest point 12,415 feet)

**Elevation Gain:** +1,435 feet - 16 feet = +1,419 feet

**Open In Summer To:** HIKING, HORSE, MTN. BIKING, 4X4

**Closed To:** ATV, MOTORCYCLE

**Open In Winter To:** X-C SKIING, SNOWSHOEING

### **Access:**

- From I-70 take Exit 195, Copper Mountain / Leadville, and travel south on HWY 91 toward Leadville.
- Travel south 5.3 miles. The Mayflower Gulch trailhead and parking area will be on the left side.

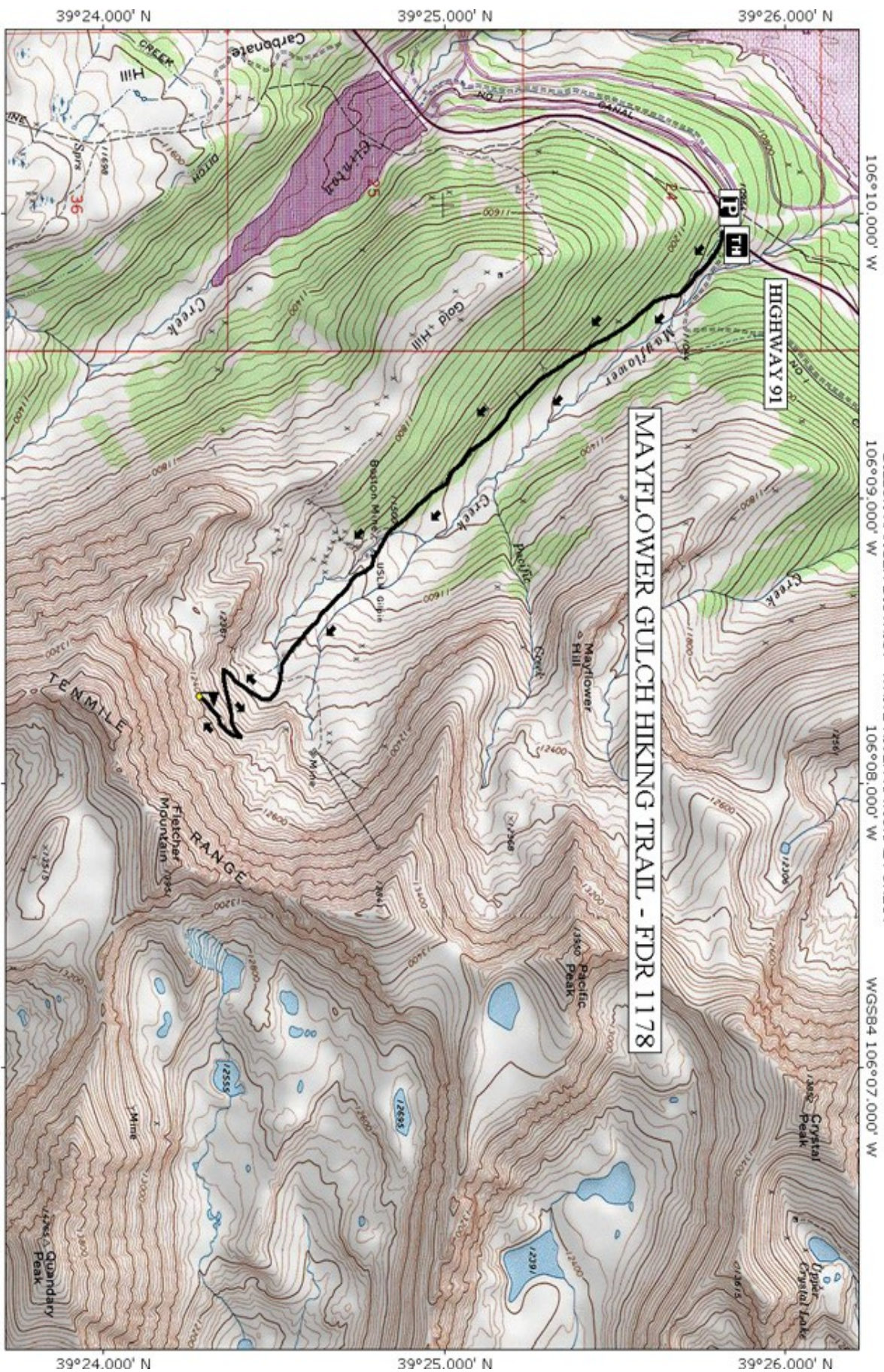
### **Trail Highlights:**

- Begin by traveling up the access road that runs parallel to the Mayflower Creek.
- Approximately 1 mile from the trailhead you will come upon some mining ruins on the right side of the road. A little further on and you will see the ruins of a mining cabin on the left.
- Approximately 0.6 miles further and you will come to the mining ruins of the Boston Mine. Just before the mine there is a gate, beyond which motor vehicles are not allowed.
- The Boston Mine camp once occupied this setting with its' boarding house and cabins. Please respect the remaining structures.
- Contour around the hills, gradually climbing toward the open drainage of Mayflower Gulch. After approximately 1 mile, the trail descends easily toward the Mayflower Amphitheater, providing magnificent views of Mayflower Hill (elevation 12,389 feet), Pacific Peak (elevation 13,950 feet) and Fletcher Mountain (elevation 13,951 feet).

### **Important Information:**

- The first portion of this route crosses property owned by Climax Molybdenum Company (AMAX). This public access is provided as a courtesy of AMAX. Please respect their property and be mindful that you may encounter some mining activity.
- Avalanche danger may exist in this area in the winter so travel appropriately.

*THE INFORMATION CONTAINED HEREIN IS INTENDED TO BE A GENERAL GUIDE ONLY, NOT FOR NAVIGATIONAL PURPOSES..*



MAYFLOWER GULCH HIKING TRAIL - FDR 1178

Map created with TOPO!® ©2003 National Geographic (www.nationalgeographic.com/topo)

