



U. S. Department of Agriculture
Dillon Ranger District
680 Blue River Parkway
Silverthorne, CO 80498
(970) 468-5400



DEER CREEK ROAD - FDR 5

Difficulty: MODERATE TO MORE DIFFICULT

Trail Use: Moderate

Length: 4.0 miles (one-way to summit of Radical Hill)

Elevation: Starts at 10,569 feet and ends at 12,621 feet (highest point 12,621 feet)

Elevation Gain: +2,059 feet - 7 feet = +2,052 feet

Open In Summer To: HIKING, MTN. BIKING, 4X4, ATV, MOTORCYCLE

Open in Winter To: X-C SKIING, SNOWSHOEING, SNOWMOBILING

Access:

- From I-70 take Exit 205, Silverthorne / Dillon, and travel east on HWY 6 toward Keystone.
- Just past Keystone, turn right onto Montezuma Road (County Road 5). Follow Montezuma Road for 7 miles to the town of Montezuma. Travel through town another 0.5 miles to Deer Creek Road. There is a parking area at the beginning of Deer Creek Rd.
- **Seasonal Closure:** Deer Creek Road is closed to motor vehicles (except snowmobiles) Nov. 23 thru May 20 or until road is dry.

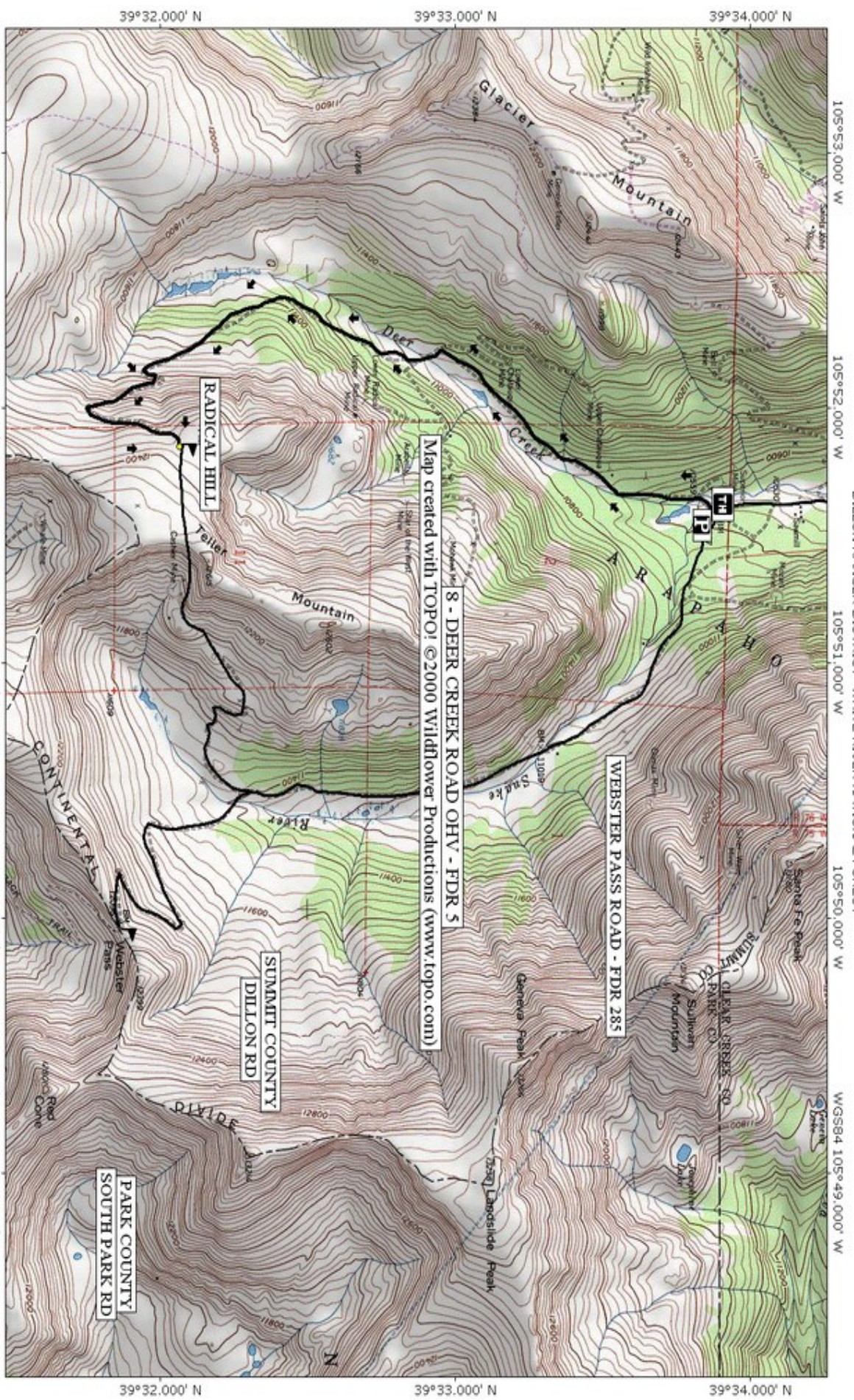
Trail Highlights:

- The Montezuma area was discovered by miners and settled during the silver boom in 1863.
- Approximately 2.0 miles from the trailhead, several ponds will become visible to your right.
- The first 1.35 miles of Deer Creek Road are on a gentle incline that takes you through a broad valley. From this point on the road becomes steep and the valley narrows.
- Approximately 3.0 from the trailhead, a loop possibility exists to go south from Radical Hill toward the Middle Fork of the Swan. The Middle Fork of the Swan will eventually take you to Tiger Road near Breckenridge. This is a great place to see the Continental Divide to the east and the Tenmile Range to the west.
- Another loop can be made at the end of the trail at Radical Hill, which is shown on the reverse side. The loop can be made by going over Radical Hill to Webster Pass Road and back to Montezuma. Both loops are rated "MORE DIFFICULT".

Important Information:

- Off-highway vehicles must be registered with Colorado State Parks. Out-of-state residents who bring OHVs into Colorado must purchase a Colorado Non-Resident OHV permit.
- Private land exists near the beginning of this route. Please respect all private property.
- This road crosses potentially dangerous avalanche paths. Please travel appropriately.
- A large portion of this road travels above timberline. For this reason, be sure to check the weather forecast and choose a clear day for your trip.

THE INFORMATION CONTAINED HEREIN IS INTENDED TO BE A GENERAL GUIDE ONLY, **NOT** FOR NAVIGATIONAL PURPOSES..



DILLON RANGER DISTRICT WHITE RIVER NATIONAL FOREST

Map created with [TOPOI](http://topo.com) ©2000 Wildflower Productions (www.topo.com)

Map created with [TOPOI](http://topo.com) ©2003 National Geographic (www.nationalgeographic.com/topo)

