



U. S. Department of Agriculture  
Dillon Ranger District  
680 Blue River Parkway  
Silverthorne, CO 80498  
(970) 468-5400

## ACORN CREEK - FDT 71

**Difficulty:** MODERATE TO MORE DIFFICULT

**Trail Use:** Low (higher during hunting season)

**Length:** 4.0 miles one-way

**Elevation:** Starts at 8,647 feet and ends at 11,318 feet (highest point 11,344 feet)

**Elevation Gain:** +2,965 feet - 294 feet = +2,671 feet

**Open To:** HIKING, HORSE, X-C SKIING, SNOWSHOEING

### Access:

- From I-70 take Exit 205, Silverthorne / Dillon, and travel north on HWY 9 for approximately 10.6 miles just after crossing the Blue River.
- Turn right at County Rd 2400 (Ute Park Rd.) and travel approximately 0.4 miles to a fork in the road.
- Turn right onto County Rd 2402 (Rodeo Dr.) and travel approximately 0.6 miles to the trailhead.

### Trail Highlights:

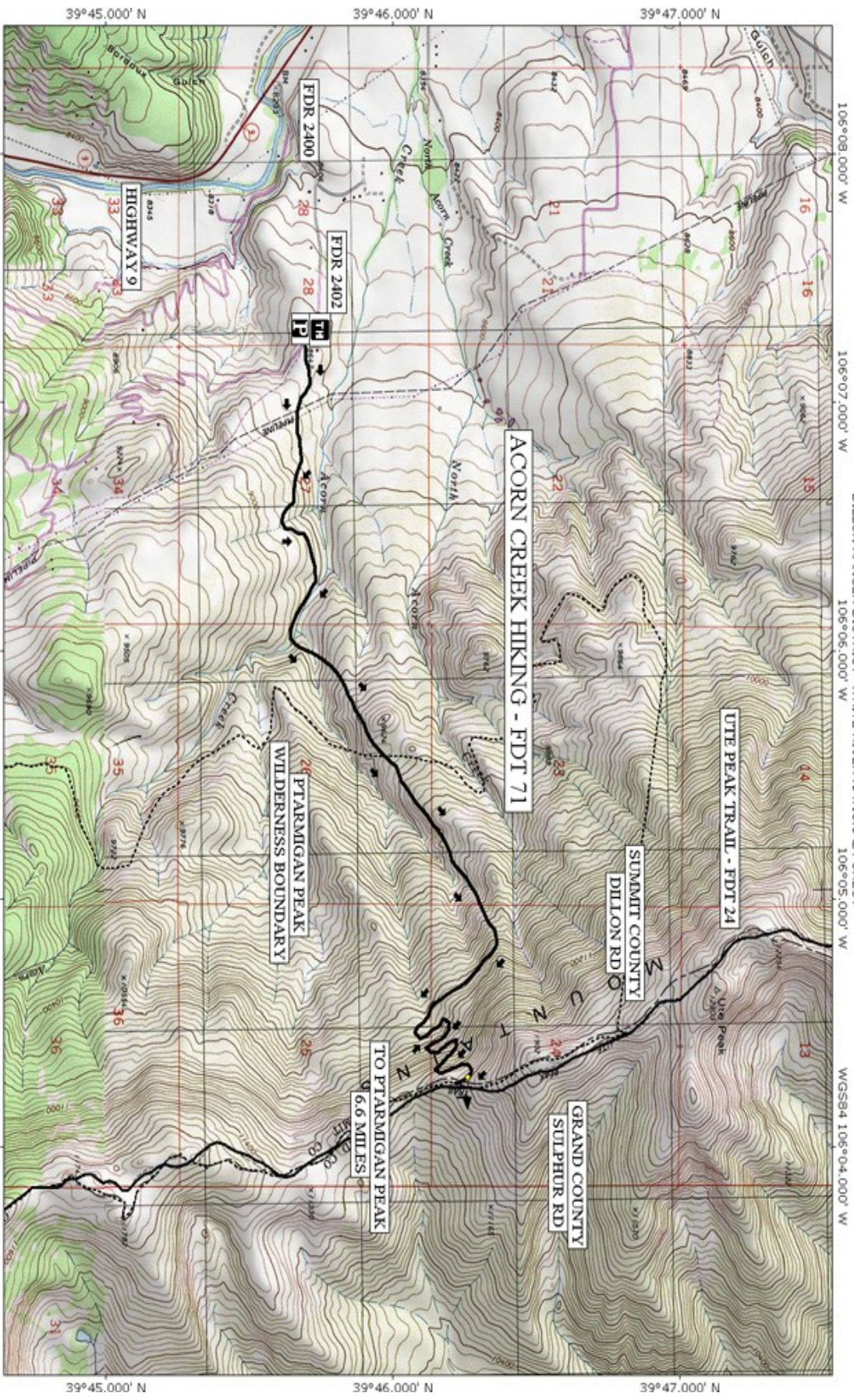
- This trail offers the hiker solitude, magnificent views of the Gore Range, and an excellent opportunity to view wildlife.
- The beginning of this trail is good for horses, but the last 1/2 mile is **NOT** recommended due to steep terrain.
- Approximately 30 yards from the trailhead you will come to a barbed wire fence with a gate and a step stile over the fence. If you enter through the gate: **PLEASE CLOSE THE GATE BEHIND YOU!**
- Approximately 1.7 miles from the trailhead you will come to the Ptarmigan Peak Wilderness boundary.
- Upon reaching the end of the Acorn Creek Trail you will intersect with the Ute Peak Trail (FDT 24).
- To continue north toward Ute Peak, elevation 12,303 feet, turn left onto the Ute Peak Trail and continue for approximately 1.2 miles.
- To continue south toward Ptarmigan Peak, elevation 12,498 feet, turn right onto the Ute Peak Trail and continue for approximately 6.7 miles.
- At Ptarmigan Peak you will intersect with the Ptarmigan Trail (FDT 35) which will take you southwest to the town of Silverthorne.

### Ptarmigan Peak Wilderness Regulations:

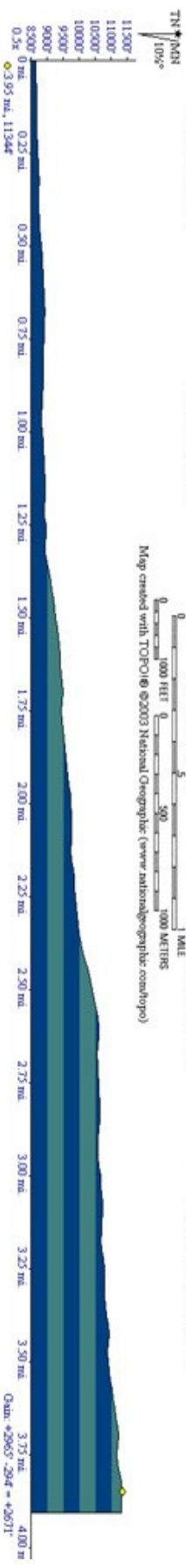
- **Motor vehicles, mountain bikes and motorized equipment are prohibited.**
- **DOGS MUST BE ON A LEASH AT ALL TIMES IN THE PTARMIGAN PEAK WILDERNESS.**
- **Group size is limited to 15 people.**
- **Camping is prohibited within 100 feet of lakes, streams and trails.**
- **Please contact Dillon Ranger District office for more information and regulations regarding the Ptarmigan Peak Wilderness Area.**

THE INFORMATION CONTAINED HEREIN IS INTENDED TO BE A GENERAL GUIDE ONLY, NOT FOR NAVIGATIONAL PURPOSES..





Map created with TOPO!® ©2013 National Geographic (www.nationalgeographic.com/topo)



Qum. #2065° -204° = +2671'