



U. S. Department of Agriculture
 Dillon Ranger District
 680 Blue River Parkway
 Silverthorne, CO 80498
 (970) 468-5400



CHIHUAHUA GULCH ROAD/TRAIL- FDR 263/FDT 78

Difficulty: MORE DIFFICULT

Trail Use: Moderate

Length: 3.4 miles one-way

Elevation: Starts at 10,477 feet and ends at 12,251 feet (highest point 12,251 feet)

Elevation Gain: +1,774 feet - 0 feet = +1,774 feet

Open In Summer To: **HIKING, HORSE, MTN. BIKING, 4X4, ATV, MOTORCYCLE**

Open In Winter To: **X-C SKIING, SNOWSHOEING**

Access:

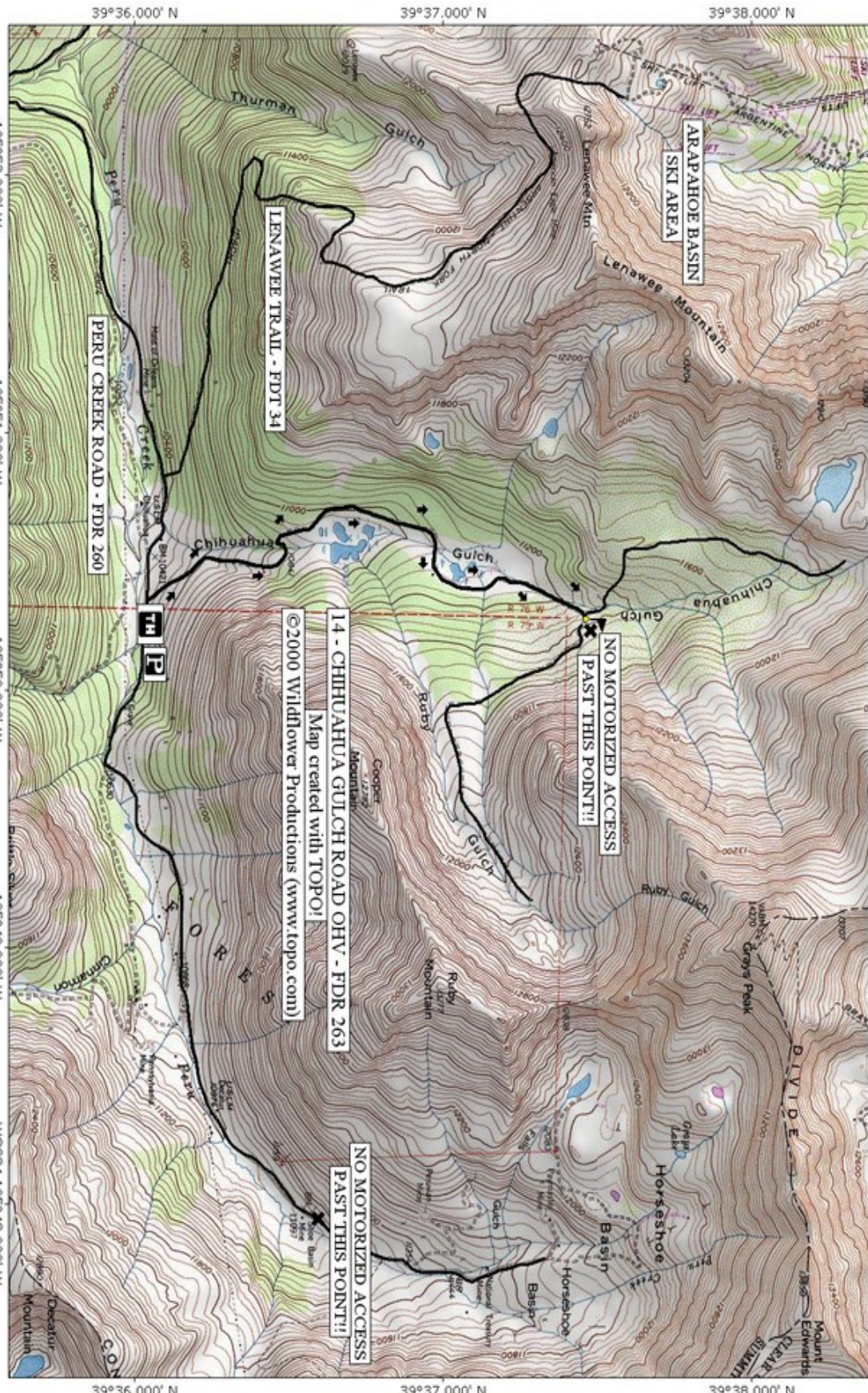
- From I-70 take Exit 205, Silverthorne / Dillon, and travel east on HWY 6 toward Keystone.
- Just past Keystone, turn right onto Montezuma Road (County Road 5).
- Follow Montezuma Road for approximately 4.6 miles to the intersection with Peru Creek Road (FDR 260). Follow Peru Creek Road for approximately 2.1 miles to the intersection with the Chihuahua Gulch Road (FDR 263). If you don't have a high clearance 4WD vehicle, then park here and hike up the road.
- Motorized Users (4x4, ATV, Motorcycles) can continue 1.9 miles up Chihuahua Gulch Rd to the end where you will come to an old buck and rail fence. **NO MOTORIZED VEHICLES ARE ALLOWED PAST THIS POINT!** There is space for a few vehicles to park here.
- **Seasonal Closure:** Chihuahua Gulch Road is closed to motor vehicles Nov. 23 thru May 20 or until road is dry.

Trail Highlights:

- Starting from Peru Creek Road, the Chihuahua Gulch Rd continually climbs upward until it crosses a stream, where it levels off and then passes several beaver ponds.
- The road continues approximately for 2.0 miles until you come to the end at a buck and rail fence. Motor vehicles are prohibited beyond this point. Continue hiking on an old double-track another 1.4 miles up to the lake.
- Chihuahua Lake, elevation 12,175 feet, is nestled against the headwall of the valley just below the Continental Divide.
- The Peru Creek drainage is rich in mining history with numerous underground mine shafts, so be careful where you walk.
- Historic relics are most meaningful in their natural settings. Please leave items where they lay so others may enjoy them.

THE INFORMATION CONTAINED HEREIN IS INTENDED TO BE A GENERAL GUIDE ONLY, NOT FOR NAVIGATIONAL PURPOSES..

• An abundance



DILLON RANGER DISTRICT WHITE RIVER NATIONAL FOREST

ARAPAHOE BASIN
SKI AREA

LENAWEE TRAIL - FDT 34

PERU CREEK ROAD - FDR 260

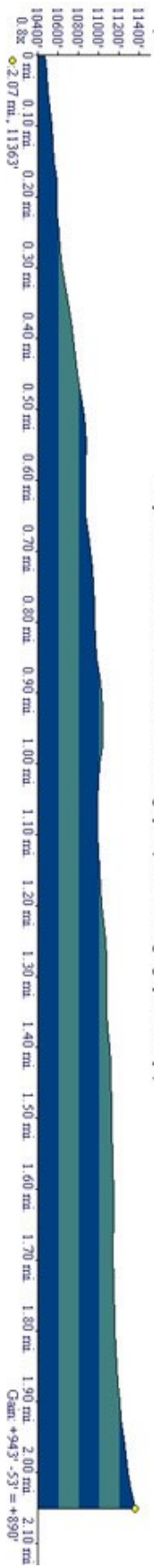
NO MOTORIZED ACCESS
PAST THIS POINT!!

14 - CHIHUAHUA GULCH ROAD OHV - FDR 263
Map created with TOPO!

©2000 Wildflower Productions (www.topo.com)
Map created with TOPO!

NO MOTORIZED ACCESS
PAST THIS POINT!!

Map created with TOPO! © 2003 National Geographic (www.nationalgeographic.com/topo)



Qarr: +943 -53 = +890