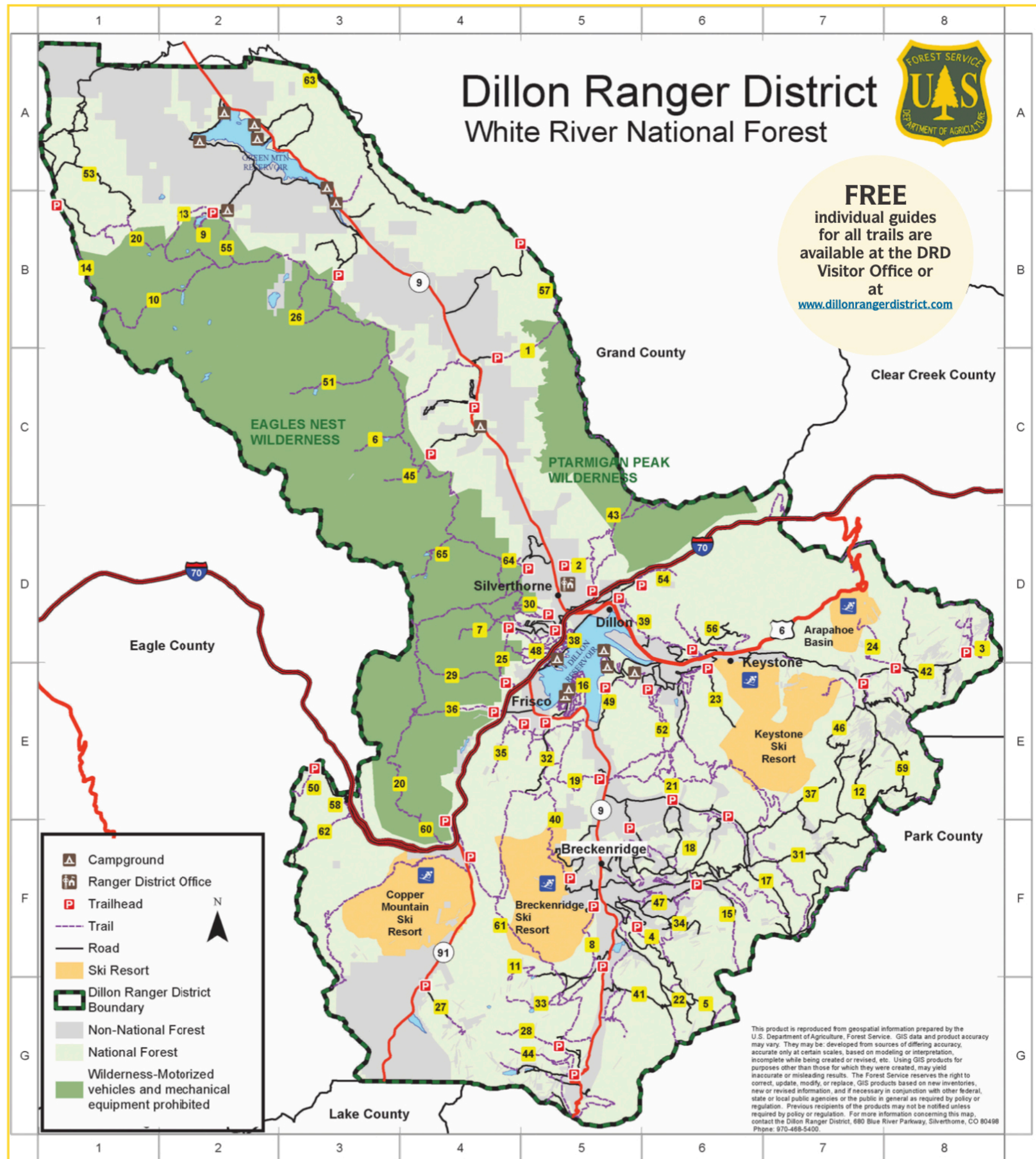


FEATURED TRAILS AND ROADS

Challenge Level: E = Easy; M = Moderate; S = Strenuous
 (W) = Trail is all or part in Wilderness Area; V = Varies

Key #	Trail / Road Name	Miles One Way	Hiking Challenge Level	Horse	Mountain Biking	OHV & Motorcycle	4x4	X/C Ski & Snowshoe	Snow mobile	Map Coordinates
1	Acorn Creek (W)	4.0	M-S	*				*		B5
2	Angler Mountain	2.5	M	*				*		D5
3	Argentine Pass	2.2	S	*	*			*		D8
4	Bakers Tank Trail System	V	E-M	*	*			*		F6
5	Boreas Pass Road	6.6	E-M		*		*	*		G6
6	Boulder Lake - Lower (W)	2.7	M	*				*		C3
7	Buffalo Mountain (W)	2.8	S	*				*		D4
8	Burro	4.0	E-M	*	*			*		F5
9	Cataract Lake - Lower (W)	2.0	E	*				*		B2
10	Cataract Lake - Upper (W)	5.0	S	*				*		B1
11	Crystal Lakes- Lower/Upper	5.0	S	*	*			*		F4
12	Deer Creek Road	4.0	M-S		*	*	*	*	*	E7
13	Eaglesmere Lakes (W)	3.6	M	*	*			*		B2
14	Elliott Ridge (W)	6.1	M	*	*			*		B1
15	French Gulch	4.1	E-S	*	*			*		F6
16	Frisco Peninsula Trail System	V	E-M	*	*			*		E5
17	Georgia Pass Road (S. Fork Swan)	4.5	S	*	*	*	*	*	*	F7
18	Golden Horseshoe Trail System	V	E-S	*	*	*	*	*	*	F6
19	Gold Hill	3.0	M	*	*			*		E5
20	Gore Range (W)	45.0	E-S	*	*			*		E3/B1
21	Horseshoe Gulch Trail System	V	E-M	*	*			*		E6
22	Indiana Creek Road	1.8	M	*	*	*	*	*	*	G6
23	Keystone Gulch Road	6.6	E-M	*	*	*	*	*	*	E6
24	Lenawee	3.8	S	*	*			*		D7
25	Lily Pad Lake (W)	1.4	E-M	*	*			*		D4
26	Lost Lake (W)	5.6	M	*	*			*		B3
27	Mayflower Gulch	2.8	M	*	*	*	*	*	*	G4
28	McCullough Gulch	1.3	M	*	*			*		G5
29	Meadow Creek (W)	4.7	M-S	*	*			*		E4
30	Mesa Cortina to So. Willow Falls (W)	4.2	E-M	*	*			*		D5
31	Middle Fork Road (Swan River)	9.2	M-S	*	*	*	*	*	*	F7
32	Miners Creek Road	2.5	M-S	*	*	*	*	*	*	E5
33	Mohawk Lakes via Spruce Creek	3.4	M	*	*	*	*	*	*	G5
34	Mount Baldy	4.5	M-S	*	*	*	*	*	*	F6
35	Mount Royal/Masontown	2.0	S	*	*			*		E4
36	North Ten Mile Creek (W)	3.4	M	*	*			*		E4
37	North Fork Road (Swan River)	4.2	M	*	*	*	*	*	*	E7
38	Old Dillon Reservoir	0.8	E-M	*	*			*		D5
39	Oro Grande	4.4	E	*	*			*		D6
40	Peaks	7.8	M	*	*			*		E5
41	Pennsylvania Creek Road	2.5	M	*	*	*	*	*	*	G5
42	Peru Creek Road	4.0	M-S	*	*	*	*	*	*	E8
43	Ptarmigan Peak (W)	6.1	M-S	*	*	*	*	*	*	D5
44	Quandary Peak	3.1	S	*	*			*		G5
45	Rock Creek-North (W)	1.6	M-S	*	*			*		C4
46	Saints John Road	2.9	M-S	*	*	*	*	*	*	E7
47	Sallie Barber	1.4	E-M	*	*			*		F6
48	Salt Lick Trail System	V	E-M	*	*			*		D5
49	Sapphire Point	0.7	E	*	*			*		E5
50	Shrine Mountain Trail	2.3	M	*	*			*		E3
51	Slate Lake - Lower/Upper (W)	9.3	M	*	*			*		C3
52	Soda Creek Trail System	V	E-M	*	*			*		E6
53	Spring Creek Area	V	M	*	*	*	*	*	*	A1
54	Straight Creek	5.4	E-M	*	*	*	*	*	*	D6
55	Surprise Lake (W)	2.6	M-S	*	*			*		B2
56	Tenderfoot Trail System	V	M-S	*	*	*	*	*	*	D6
57	Ute Peak	4.9	M	*	*			*		B5
58	Vail Pass Winter Recreation Area *fee	V	E-S	*	*	*	*	*	*	E3
59	Webster Pass Road	3.7	M-S	*	*	*	*	*	*	E8
60	Wheeler Lakes (W)	3.1	M-S	*	*			*		F4
61	Wheeler National Recreation Trail	14.0	M-S	*	*			*		F4
62	Wilder Gulch	3.5	M	*	*			*		F3
63	Williams Peak Road	11.4	M-S	*	*	*	*	*	*	A3
64	Willow Creek Trail System (W)	V	M	*	*			*		D4
65	Willow Lake / Salmon Lake (W)	7.7	M-S	*	*			*		D4



SUGGESTED HIKES:
 (#) = KEY # FROM TRAIL/ROAD INFORMATION TABLE, SHOWN AS TRAILHEAD ON MAP.

EASY TRAILS FOR THE WHOLE FAMILY
 French Gulch (#17)
 Lower Cataract Lake (#9)
 Oro Grande (#39)
 Sapphire Point (#49)
 Rainbow Lake (#40)

WATERFALLS AND CASCADES
 Cataract Creek Falls (#9)
 Continental Falls (#33)
 White Falls (#28)
 South Willow Falls (#30)

SCENIC & DESTINATION HIKES
 Baker's Tank (#4)
 Buffalo Mountain (#7)
 Lenawee (#24)
 Mayflower Gulch (#27)
 Shrine Mountain (#50)
 Willow and Salmon Lakes (#65)

This product is reproduced from geospatial information prepared by the U.S. Department of Agriculture, Forest Service. GIS data and product accuracy may vary. They may be developed from sources of differing accuracy, accurate only at certain scales, based on modeling or interpretation, incomplete while being created or revised, etc. Using GIS products for purposes other than those for which they were created, may yield inaccurate or misleading results. The Forest Service reserves the right to correct, update, modify, or replace, GIS products based on new inventories, new or revised information, and if necessary in conjunction with other federal, state or local public agencies or the public in general as required by policy or regulation. Previous recipients of the products may not be notified unless required by policy or regulation. For more information concerning this map, contact the Dillon Ranger District, 680 Blue River Parkway, Silverthorne, CO 80498 Phone: 970-469-5400.