



U. S. Department of Agriculture
 Dillon Ranger District
 680 Blue River Parkway
 Silverthorne, CO 80498
 (970) 468-5400



Licensed Only

CRYSTAL LAKES ROAD/TRAIL - FDR 803/FDT 44

Difficulty: MODERATE TO MORE DIFFICULT

Trail Use: Moderate

Length: 3.0 miles (one-way to Lower Crystal Lake), 4.5 miles (one-way to Upper Crystal Lake)

Elevation: Starts at 10,174 feet and ends at 12,982 feet (highest point 12,982 feet)

Elevation Gain: +2,808 feet - 0 feet = +2,808 feet

Open In Summer To: **HIKING, HORSE, MTN. BIKING, 4X4, MOTORCYCLE (Licensed Only)**

Open in Winter To: **X-C SKIING, SNOWSHOEING**

*****MOTORIZED ACCESS IS NOT ALLOWED BEYOND LOWER CRYSTAL LAKE YEAR-ROUND.**

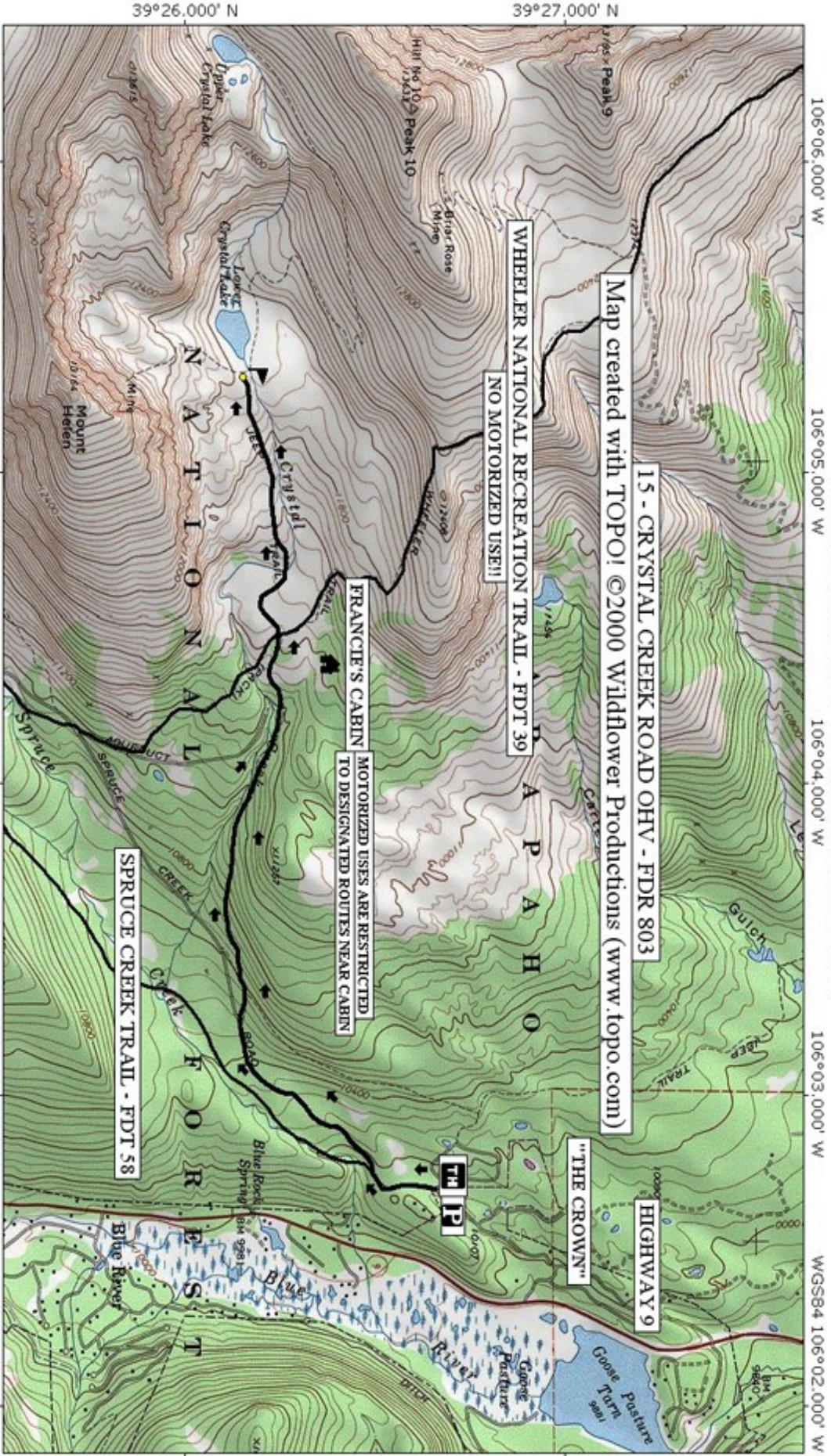
Access:

- From I-70 take Exit 203, Frisco / Breckenridge, and travel south on HWY 9 through Frisco and travel to Breckenridge.
- Continue south on HWY 9 past Breckenridge for 2.3 miles and turn right onto Spruce Creek Rd (County Rd 800). Follow this road through the subdivision, merging left at the junction with Crown Rd.
- Take left turns at the forks for approximately 1.8 miles until you come to Spruce Creek Trailhead parking area.
- Park here if you want to hike the road to Lower Crystal Lake or continue the 4WD road, Spruce Creek Rd (FDR 800).
- **Seasonal Closure:** Spruce Creek Rd and Crystal Lake Rd are closed to motor vehicles Nov. 23 thru May 20 or until road is dry.

Trail Highlights:

- The trail begins as a road and turns into a trail at Lower Crystal Lake. The road will take you through numerous alpine meadows which are fed by the tributaries of Crystal Creek.
- Approximately .20 miles from the trailhead you will come to a junction with Crystal Lake Rd. (FDR 803), turn right. After another 0.10 miles the Burro Trail (FDT 44) crosses the road.
- Approximately 1.4 miles from the trailhead you will come to an intersection with the Wheeler National Recreation Trail (FDT 39), go straight on the road to continue toward Lower Crystal Lake.
- The road rises onto a shelf with Lower Crystal Lake nestled against the mountain walls. A cabin at the lake offers some shelter from the wind. Directly west of the cabin is Peak 10 at the Breckenridge Ski Area.
- The road ends at Lower Crystal Lake and a hiking trail continues for approximately 1.93 miles up to Upper Crystal Lake.

THE INFORMATION CONTAINED HEREIN IS INTENDED TO BE A GENERAL GUIDE ONLY, NOT FOR NAVIGATIONAL PURPOSES..



DILLON RANGER DISTRICT WHITE RIVER NATIONAL FOREST

Map created with [TOPOI](http://www.topo.com) ©2000 Wildflower Productions (www.topo.com)

WHEELER NATIONAL RECREATION TRAIL - FDT 39
NO MOTORIZED USE!!!

FRANCIE'S CABIN
MOTORIZED USES ARE RESTRICTED
TO DESIGNATED ROUTES NEAR CABIN

SPRUCE CREEK TRAIL - FDT 58

15 - CRYSTAL CREEK ROAD OHV - FDR 803

HIGHWAY 9

"THE CROWN"

THIP

