



U. S. Department of Agriculture
Dillon Ranger District
680 Blue River Parkway
Silverthorne, CO 80498
(970) 468-5400



LOST LAKE - FDT 64

Difficulty: MODERATE

Trail Use: Low (Heavy during hunting season)

Length: 5.6 miles (one-way to Lost Lake), 11.5 miles around loop

Elevation: Start at 8,032 feet (highest point 10,167 feet)

Elevation Gain: +2,249 feet - 118 feet = +2,131 feet

Recommended Use: HIKING, HORSE, X-C SKIING, SNOWSHOEING

Access:

- From I-70 take Exit 205, Silverthorne / Dillon, and travel north on HWY 9.
- Travel north on HWY 9 for approximately 16.8 miles. Just after mile marker 118 turn left onto Heeney Rd (County Road 30) toward the town of Heeney.
- Follow County Road 30 for approximately 0.5 miles and turn right into the parking area at the old Grandview Cemetery on your right. Park here if you don't have a high clearance 4WD vehicle.
- Continue up Brush Creek Rd (FDR 1695) which is across the road from the cemetery.

Trail Highlights:

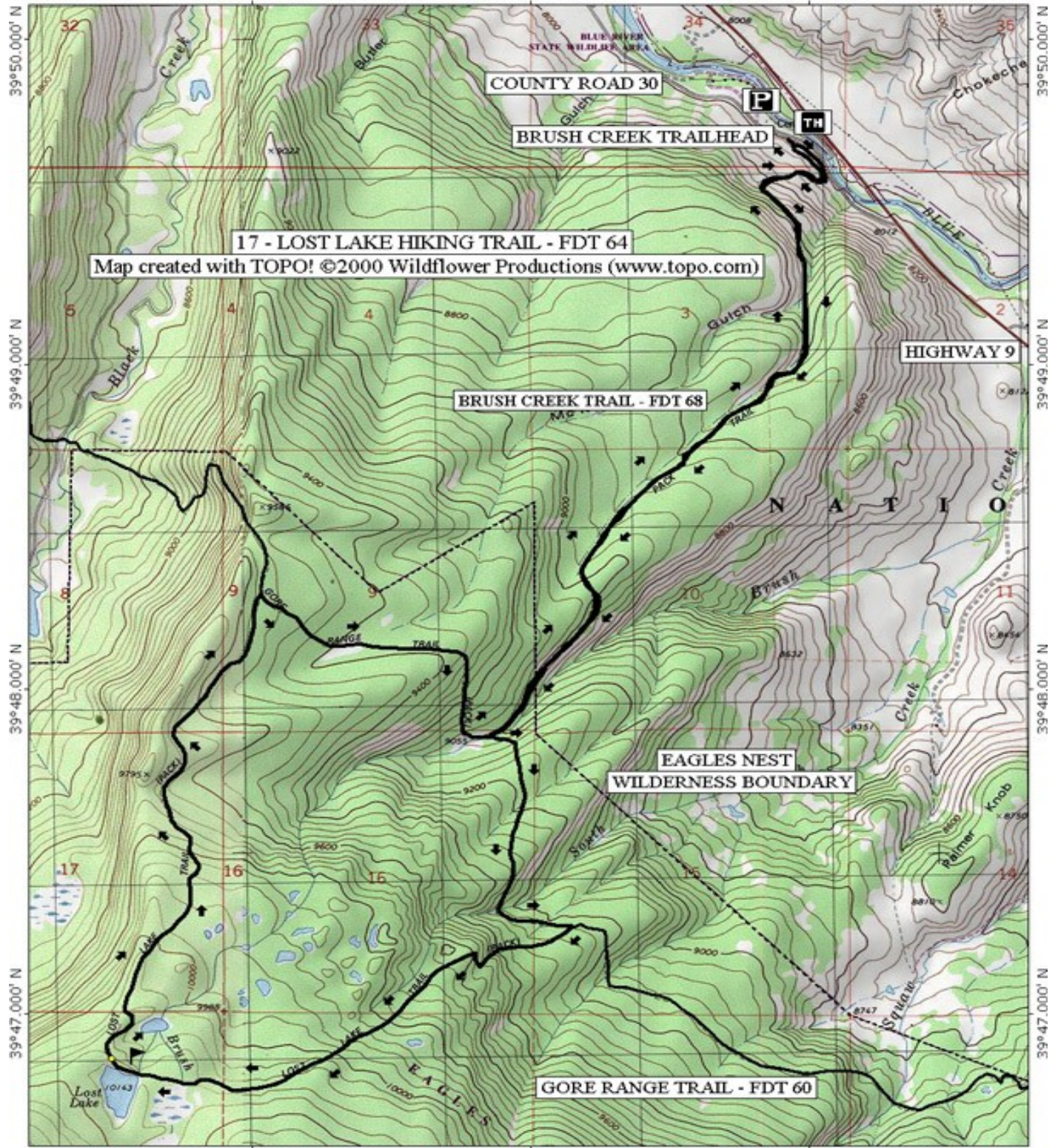
- You will travel on Brush Creek Road (FDR 1695) for 2.9 miles. The beginning travels through sagebrush offering an excellent view of Green Mountain Reservoir and the Lower Blue River Valley.
- Follow Brush Creek Road to its end at the Brush Creek Trailhead.
- Follow Brush Creek Trail (FDT 68) to the intersection with the Gore Range Trail (FDT 60). Turn left (south) and travel approximately 1.0 miles to the next trail junction. Turn right (southwest) and follow this segment of Lost Lake Trail for another 1.7 miles to Lost Lake.
- You may continue on the Lost Lake Trail for another 2 miles finishing the loop to the north and east back to the Gore Range Trail. At the intersection you will then turn right (south) for another 1.0 miles to the intersection with the Brush Creek Trail and return to the trailhead.

Eagles Nest Wilderness Regulations:

- **Motor vehicles, mountain bikes, and motorized equipment are prohibited.**
- **DOGS MUST BE ON A LEASH AT ALL TIMES IN THE EAGLES NEST WILDERNESS.**
- **Group size is limited to 15 people.**
- **Camping is prohibited within 100 feet of lakes, streams and trails.**
- **Campfires are prohibited at Lost Lake (stoves only).**
- **Please contact Dillon Ranger District office for more information and regulations regarding the Eagles Nest Wilderness Area.**

THE INFORMATION CONTAINED HEREIN IS INTENDED TO BE A GENERAL GUIDE ONLY, **NOT** FOR NAVIGATIONAL PURPOSES..

DILLON RANGER DISTRICT WHITE RIVER NATIONAL FOREST
106°15.000' W 106°14.000' W WGS84 106°13.000' W



17 - LOST LAKE HIKING TRAIL - FDT 64
Map created with TOPO! ©2000 Wildflower Productions (www.topo.com)

BRUSH CREEK TRAIL - FDT 68

EAGLES NEST
WILDERNESS BOUNDARY

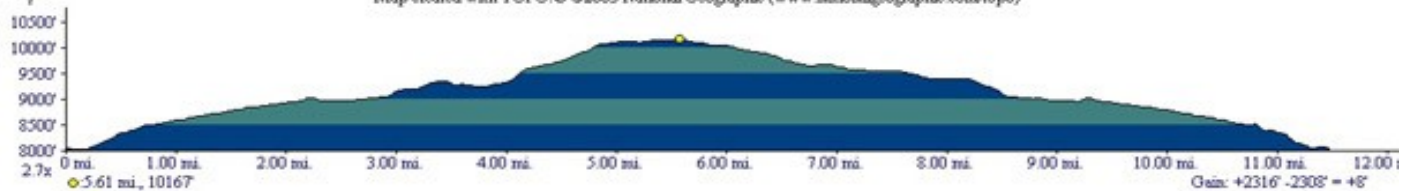
GORE RANGE TRAIL - FDT 60

106°15.000' W 106°14.000' W WGS84 106°13.000' W

TN MN
106°

0 1000 FEET 0 500 1000 METERS

Map created with TOPO! ©2003 National Geographic (www.nationalgeographic.com/topo)



Gain: +2316' -2308' = +8'