



U. S. Department of Agriculture
Dillon Ranger District
680 Blue River Parkway
Silverthorne, CO 80498
(970) 468-5400

MEADOW CREEK - FDT 33

Difficulty: MODERATE TO MORE DIFFICULT

Trail Use: Moderate

Length: 4.7 miles one-way to Eccles Pass (elevation 11,900 feet)

Elevation: Start at 9,157 feet and ends at 11,900 feet (highest point 11,900 feet)

Elevation Gain: +2,743 feet - 0 feet = +2,743 feet

Open To: **HIKING, HORSE (not recommended)*, X-C SKIING, SNOWSHOEING**

Access:

- From I-70 take Exit 203, Frisco / Breckenridge, and travel to the traffic circle on the north side of I-70. Go around the traffic circle to the gravel road with the US Forest Service sign at the entrance and turn right.
- Follow this frontage road to the end where you will find the parking area and trailhead.

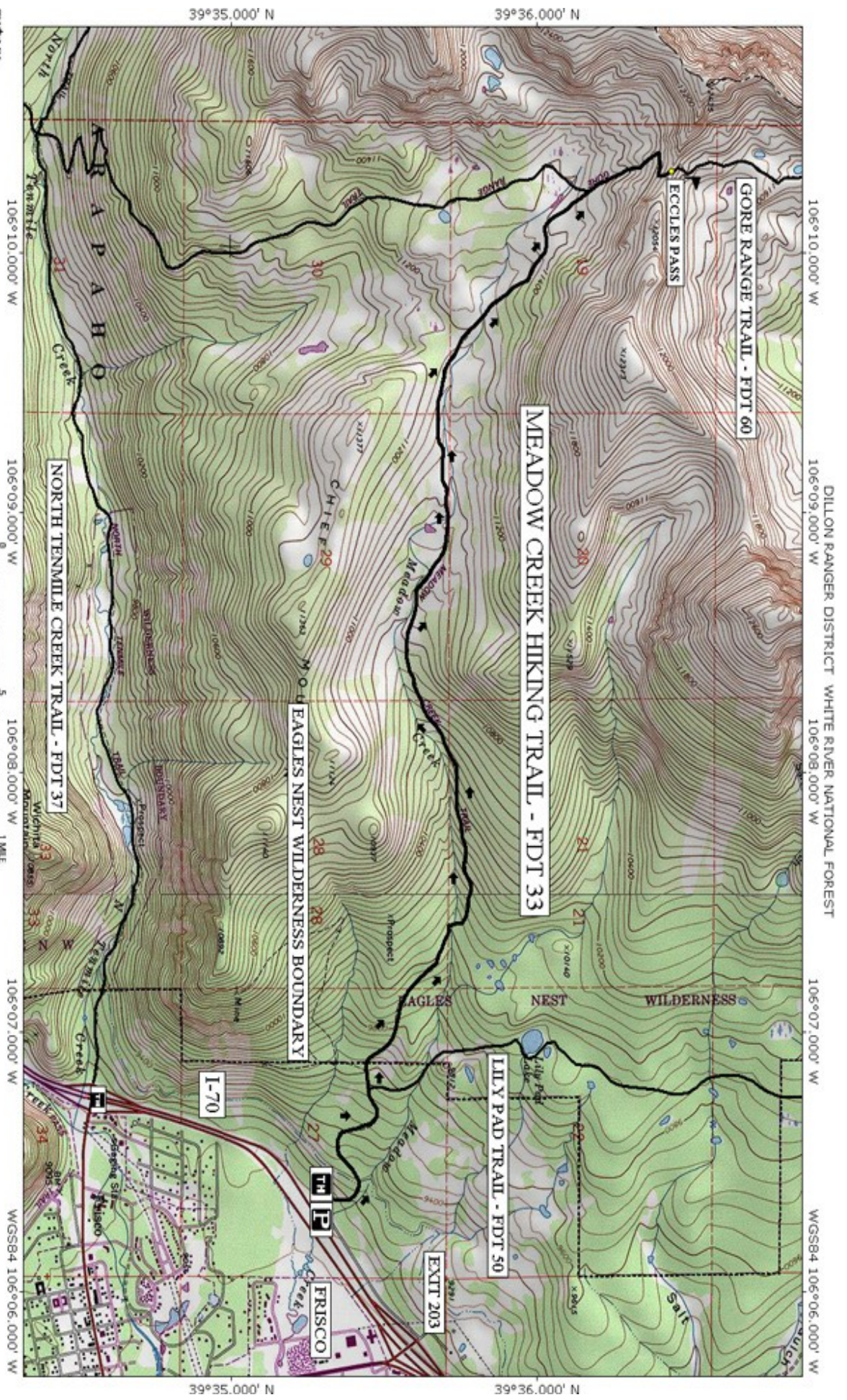
Trail Highlights:

- This trail enters the Eagles Nest Wilderness Area (see regulations below).
- At the beginning of the trail the grade increases significantly as it passes through aspen stands.
- Approximately 0.6 miles from the trailhead you will come to the intersection with the Lily Pad Trail (FDT 50). This is also a pleasant hike with outstanding views and the lake is approximately 0.7 miles up the trail.
- Pleasant views of Dillon Reservoir and the Upper Blue Valley can be seen from occasional clearings along the Meadow Creek Trail.
- Near timberline, the trail opens up in a large meadow providing beautiful views of the surrounding area. Once above timberline, look for rock cairns marking the trail.
- Approximately 4.2 miles from the trailhead you will intersect the Gore Range Trail (FDT 60). Bear to the right and continue on toward the summit of Eccles Pass, elevation 11,900 feet.
- **HORSES ARE NOT RECOMMENDED ON THIS TRAIL DUE TO DIFFICULT CONDITIONS.**

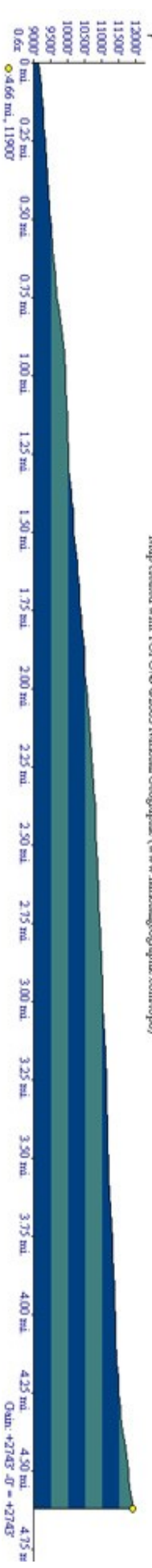
Eagles Nest Wilderness Regulations:

- **Motor vehicles, mountain bikes and motorized equipment are prohibited.**
- **DOGS MUST BE ON A LEASH AT ALL TIMES IN THE EAGLES NEST WILDERNESS.**
- **Group size is limited to 15 people.**
- **Camping is prohibited within 100 feet of lakes, streams and trails.**
- **Campfires are prohibited within 1/4 mile of lakes and 100 feet of any trail or stream.**
- **Please contact Dillon Ranger District office for more information and regulations regarding the Eagles Nest Wilderness Area.**

*THE INFORMATION CONTAINED HEREIN IS INTENDED TO BE A GENERAL GUIDE ONLY,
NOT FOR NAVIGATIONAL PURPOSES..*



Map created with TOPOLIF ©2003 National Geographic (www.nationalgeographic.com/topo)



TN 100%

39°35.000' N

39°36.000' N

39°35.000' N

39°36.000' N

106°10.000' W 106°09.000' W 106°08.000' W 106°07.000' W 106°06.000' W